



Dimmer Switches



The smooth modern lines of the Polar accessory plate will fit easily into traditional and contemporary designs alike.

Polar dimmer switches are developed largely for use with Tungsten, Halogen and Low Voltage lamps. The dimmer switches are interchangeable with the dimmer modules used in the MINIGRID range.

Dimmer Switches

Product Range

Dimmer Switches For Tungsten, Halogen & Low Voltage

PRW140	1 Gang 2 Way 400W/Va Resistive/Inductive Dimmer Switch
PRW145	1 Gang 2 Way 250W/Va Resistive/Inductive Dimmer Switch
PRW146	2 Gang 2 Way 250W/Va Resistive/Inductive Dimmer Switch
PRW147	3 Gang 2 Way 250W/Va Resistive/Inductive Dimmer Switch
PRW148	4 Gang 2 Way 250W/Va Resistive/Inductive Dimmer Switch



PRW140, PRW145



PRW146



PRW147

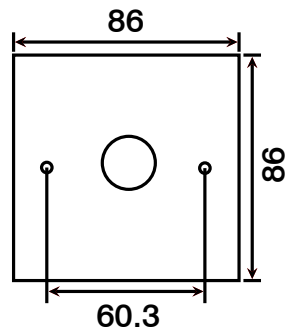


PRW148

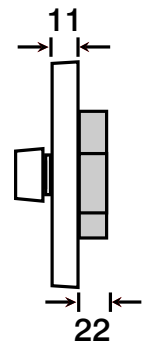
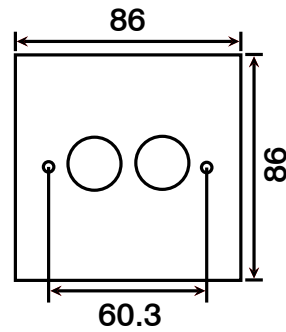
Dimmer Switches

Product Dimensional Drawings (mm)

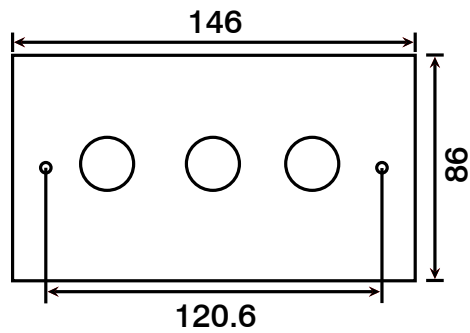
PRW140, 145



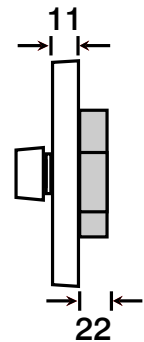
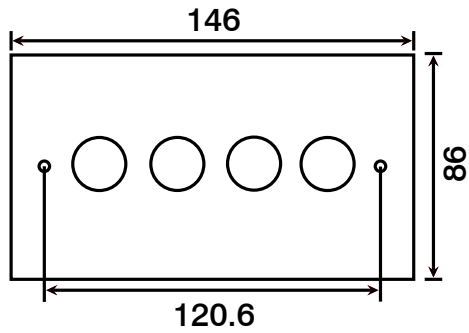
PRW146



PRW147



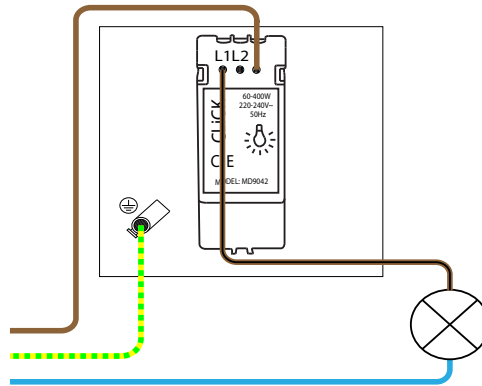
PRW148



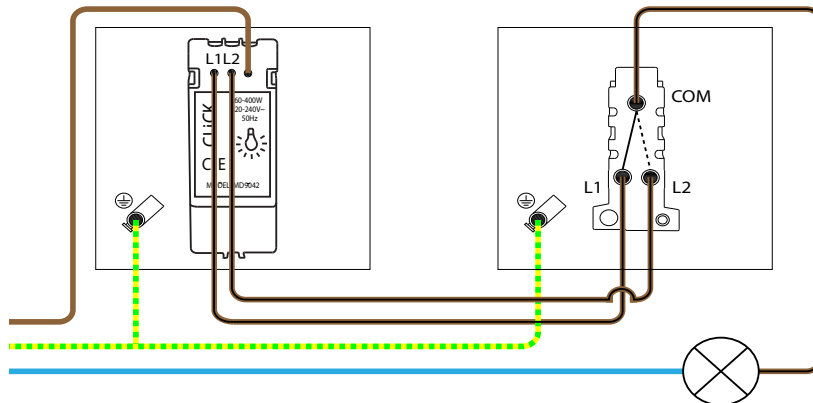
Dimmer Switches

Wiring Diagrams

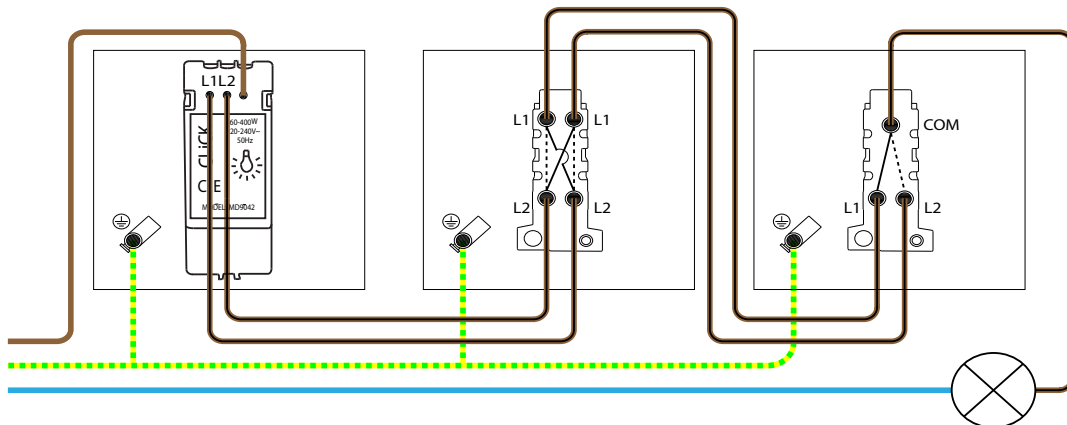
1 Way Switched Circuit



2 Way Switched Circuit



Intermediate Switched Circuit



Errors & Omissions excluded. Specification is subject to change without notice.

V1.0

Scolmore International Ltd, 1 Scolmore Park, Landsberg, Lichfield Road Ind. Estate, Tamworth, Staffordshire, B79 7XB

Telephone: 01827 63454

E-mail: sales@scolmore.com, technical@scolmore.com

Facsimile: 01827 63362

Website: www.scolmore.com

Dimmer Switches

Technical Specification

Dimmer Switches For Tungsten, Halogen & Low Voltage

Material Composition	Front Plate & Dimmer Knob: Urea Rear Housing: Nylon Terminals: Brass, Terminal Screws: Steel & Yellow Passivated
Voltage	240V~ 50Hz
Load Types	Resistive / Inductive
Module Types	Leading Edge Technology
Terminal Size	3.5mm \varnothing
Cable Size	2 x 1.5mm ²
Back Box Depth	35mm - 47mm
Modular	Yes (MD9001, MD9010, MD9022, MD9042)
Warranty	20 Years (Electronic Parts 1 Year)
Anti Microbial Certified	Yes
IP Rating	IP20
Operational Temperature	-5° to +40°C
Standards	The Low Voltage Directive 2006/95/EC, Modified ISO 22196 BS EN 60669-2-1 : 2000 +A1 EN 61000 : 1995 + A1, EN 55015 : 2000 + A1

Additional Information

We recommend using branded tungsten halogen lamps that incorporate internal fuses. The use of inferior, non-branded lamps may require the nominal rating of the dimmer to be reduced.

When dimming low voltage lighting, this dimmer must be used with dimmable, leading edge transformers only. Always check compatibility prior to installation and if in doubt, seek advice with transformer manufacturer.

Ensure that the mains supply is isolated before commencing installation and refer to the circuit diagram supplied with the relevant product.

We DO NOT recommend mixing electronic and magnetic transformers on the same dimmer switch.

All white moulded accessories are manufactured using Urea Formaldehyde, which has similar inherent properties to antimicrobial additives that inhibit the growth of infectious diseases. All products were independently tested and achieved a 99.9% kill rate across all four types of strains of bacteria - MRSA, E-Coli, Salmonella, and Klebsiella Pneumoniae.



DECLARATION OF CONFORMITY

1. *Issuer Name* Scolmore International Limited
2. *Issuer Address* 1 Scolmore Park, Landsberg,
Lichfield Road Industrial Estate,
Tamworth, Staffordshire, B79 7XB
3. *Object(s) of Declaration* Polar Range
a. *Group* Dimmers
b. *Model No.* PRW140, PRW145, PRW146, PRW147, PRW148
4. *The object of the declaration described above is in conformity with the requirements of the following Legislations:*
- | Document No | Title |
|-------------|-----------------------|
| 2006/95/EC | Low Voltage Directive |

5. *All products contained within the aforementioned comply with the relevant standards and requirements listed below.*

EN 55015 : 2000 +A1
EN 61000 : 1995 +A1
BS EN 60669-2-1 : 2000

6. *I hereby declare that the equipment named above has been designed to comply with the relevant sections of the above referenced specifications. The unit complies with all applicable Essential Requirements of the Directives.*

In conjunction with the above all manufacture and process controls are in accordance with ISO 9001:2008

Signed, for and on behalf of: Scolmore International Limited

A handwritten signature in black ink, appearing to read "Bettson".

Steven Bettson BSc - Senior Technical Support Engineer

CE 10