



A Premium Range of
Bright White Accessories





A Premium Range of Bright White Accessories



Antimicrobial Certified Products

All white moulded and our Part M™ Range of wiring accessories are manufactured using Urea Formaldehyde, which has similar inherent properties to antimicrobial additives that inhibit the growth of infectious diseases. All products independently tested achieved a 99.99% kill off rate across all four types of the strains of bacteria - MRSA, E-Coli, Salmonella and Klebsiella Pneumoniae.

Contents

Switches	g5
Back Boxes	g9
Power Socket Outlets	g12
13A Fused Connection Units	g14
Control Switches	g15
Ceiling Accessories	g18
Socket & Blank Plates	g20
Telephone & Data Sockets	g22
TV & Satellite	g23
New Media™ Plates	g24
Patress Boxes	g25
Dry Lining Boxes	g26

The Polar™ range of domestic electrical accessories has been developed as a distinctly different range to the traditional Click® accessory range manufactured by Scolmore International Ltd.

The Polar™ range was born out of a desire to offer a bright white accessory product. Colour choice with accessories is no different to colour choice of wallpaper, paints or other internal decorations. Installers have very definite views on just which tone or shade of white is right for a particular installation.

Given the demand for a different accessory colour we took the opportunity to review all other aspects of the new range including technical features, materials used and the aesthetic appeal of the individual products. The net result is a product quite different in a number of ways to the established Click® product but still offering the same levels of high quality and competitive pricing. So confident are we of the durability and reliability of the Polar™ product that we guarantee these products against any fault in materials or manufacture for no less than 20 years.

Polar™ accessories offer added value over the basic versions of similar products offered by our competitors and include the following:

- X rated modular plate switches – Polar™ light switches are all full 10AX rated switches of modular construction. The modular design allows installers infinite flexibility in devising customised switching arrangements. In fact the diversity of the types of modules available within the Polar™ range make this a true domestic grid system.
- Full certification on all 13A socket outlets and fused connection units. These products also feature twin earth terminals as standard.
- 45A shower switches are upgraded to 50A as standard so as to accommodate the growing demand for higher rated power showers.
- The sharp, crisp lines of the Polar™ plates are complemented by gently curved rockers on all

switches plus modern grey backs and matching print to switches and plates alike. The modern feel of the Polar™ range is further enhanced by amber coloured neons throughout and matching amber switchgear on the 45A accessories. All neons are flush mounted.

20 YEAR No Quibble Guarantee

All Polar™ accessories are covered by our straight forward 'No Quibble Guarantee' against any fault in materials or manufacture experienced at any time within 20 years of the date of supply.

Switches

10AX Plate Switches (Modular)
 10AX Architrave Switches (Modular)
 Dimmer Switches | Control Switches
 45A Switches | 50A Pull Switch

A comprehensive selection of light switches, control switches, 45A and 50A switches are available for wall and ceiling mounting. All light switches are 10AX rated and are of modular construction. The wide range of modules available ranges from blanks, 1 way and 2 way, through intermediates, key switches and bell push, to 20A rated double pole switch modules.

All modules are simple 1 screw fixing and therefore offer the ultimate in flexibility when devising a custom made domestic grid installation. All Polar™ modules are fully interchangeable and can be used to replace existing modules or to furnish blank plates. In addition Polar™ modules can be used with all relevant items in the Click® moulded and metal ranges.

The gentle curve on the switch rocker of the module facilitates a smooth switching operation as well as providing a modern and distinctive design feature.

MINIGRID®



The products illustrated in this section of the catalogue are finished plates and unfurnished mounting plates.

For comprehensive information on the full range of modules available please refer to our Minigridd™ product brochure.



PRW010/PRW011



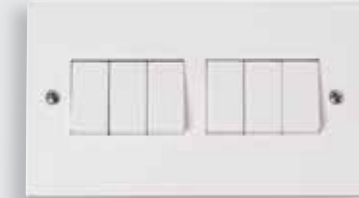
PRW012



PRW013



PRW019



PRW105



PRW811



PRW812



PRW813

MINIGRID® For the complete range of Minigridd™ modules, see the dedicated Minigridd™ section, page j18.

Plates Switches - MiniGrid™

PRW010	10AX 1 Gang 1 Way Plate Switch
PRW011	10AX 1 Gang 2 Way Plate Switch
PRW012	10AX 2 Gang 2 Way Plate Switch
PRW013	10AX 3 Gang 2 Way Plate Switch
PRW019	10AX 4 Gang 2 Way Plate Switch
PRW105	10AX 6 Gang 2 Way Plate Switch

Switch modules interchangeable with Minigridd™ modules in Polar™ white (PW) finish.

Wide Rocker Switches - Non Modular

PRW811	10AX 1 Gang 2 Way Wide Rocker Switch
PRW812	10AX 2 Gang 2 Way Wide Rocker Switch
PRW813	10AX 3 Gang 2 Way Wide Rocker Switch

Standards: BS EN 60669

Back Box Depth: 16mm Minimum Cable Size: 4 x 1.5mm² / 2 x 2.5mm² / 1 x 6mm² Maximum

Dimensions: 1 Gang: (86mm x 86mm x 11mm), 2 Gang: (146mm x 86mm x 11mm)



PRW015



PRW025



PRW171



PRW172

MINIGRID® For the complete range of Minigridd™ modules, see the dedicated Minigridd™ section, page j18.

Plates Switches

- PRW015** 10AX 1 Gang 2 Way Paddle Switch
- PRW025** 10AX 1 Gang Intermediate Plate Switch

Switch modules interchangeable with Minigridd™ modules in Polar™ white (PW) finish.

Architrave Switches - MiniGrid™

- PRW171** 10AX 1 Gang 2 Way Architrave Switch
- PRW172** 10AX 2 Gang 2 Way Architrave Switch

Polar™ architrave plates are suitable for flush mounting using the WA671 and WA671 steel knock out boxes or for surface mounting the dedicated architrave back boxes PRW175 & PRW176 can be used.

The architrave switch plates will not accept MD070 & MD075 3 position switch modules.

Standards: BS EN 60669

Back Box Depth: 16mm Minimum Cable Size: 4 x 1.5mm² / 2 x 2.5mm² / 1 x 6mm² Maximum

Dimensions: 015, 025: (86mm x 86mm x 11mm) 171: (85mm x 30mm x 11mm) 172: (145mm x 30mm x 11mm)



PRW401



PRW402



PRW403



PRW404



PRW406



PRW426



PRW432

MINIGRID® For the complete range of Minigridd™ modules, see the dedicated Minigridd™ section, page j18.

Unfurnished Plates - MiniGrid™

- PRW401** 1 Gang MiniGrid™ Unfurnished Plate - 1 Aperture
- PRW402** 1 Gang MiniGrid™ Unfurnished Plate - 2 Apertures
- PRW403** 1 Gang MiniGrid™ Unfurnished Plate - 3 Apertures
- PRW404** 2 Gang MiniGrid™ Unfurnished Plate - 2 x 2 Apertures
- PRW406** 2 Gang MiniGrid™ Unfurnished Plate - 2 x 3 Apertures
- PRW426** 2 Gang MiniGrid™ Unfurnished Plate - 6 In-Line Apertures
- PRW432** 2 Gang MiniGrid™ Unfurnished Plate - 3 Apertures

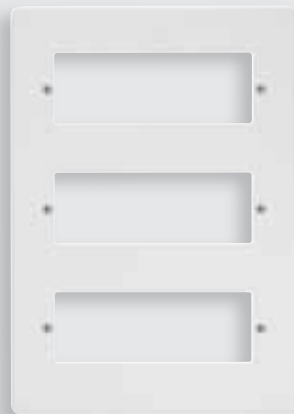
Utilises Polar™ white (PW) Minigridd™ modules.

Back Box Depth: Dependant on modules used

Dimensions: 1 Gang: (86mm x 86mm x 11mm), 2 Gang: (146mm x 86mm x 11mm)



PRW612



PRW618



MINIGRID®

The furnished plate shown here contains a selection of both single and twin width Minigrid™ modules. The yoke 'GR100' is required to mount the Minigrid™ modules into prior to assembling the frontplate.

MINIGRID® GR101 yokes supplied complete with the frontplate. Also available as a spare. For the complete range of Minigrid™ modules, see the dedicated Minigrid™ section, page j18.

2 Tier Unfurnished Plates - MiniGrid™

PRW612 2 Tier MiniGrid™ Unfurnished Plate & Yokes - 12 Apertures - Polar™

3 Tier Unfurnished Plates - MiniGrid™

PRW618 3 Tier MiniGrid™ Unfurnished Plate & Yokes - 18 Apertures - Polar™

Decorative finished Deco® victorian plate finishes also available.

Back Box Depth: 47mm Minimum

Dimensions: 12 Module: (146mm x 146mm x 11mm) 18 Module: (146mm x 227mm x 11mm)



WA512



WA518

MINIGRID® Galvanised steel back boxes supplied for flush mounting of the large Minigrid™ plates.

Galvanised Steel Back Boxes

WA512 2 Tier 47mm Deep K.O. Box

WA518 3 Tier 47mm Deep K.O. Box

Dimensions: WA512: 137mm x 137mm WA518: 137mm x 197mm



PRW140 / 145



PRW146



SP900



MD9001



PRW147



PRW148

We recommend the use of branded halogen lamps with all Polar™ dimmers. The use of inferior, non-branded lamps may require the nominal rating of the dimmer to be reduced. These dimmer switches have not been designed for use with LED lamps. However, they may be suitable for some good quality LED lamps. For further information please contact the Click® technical support team.

Dimmer Modules

- MD9001** 6A 2 Way Push On/Off (Non-Dimming) Module (25 x 62mm)
- MD9010** 1-10V Analogue Dimmer Module (25 x 62mm)
- MD9022** 250W 2 Way Dimmer Module (25 x 62mm)
- MD9042** 400W 2 Way Dimmer Module (25 x 62mm)
- MD9014** 100W Dual Mode Dimmer Module with Trim (26.5 x 55mm)

Dimmer Switches

- PRW140** 1 Gang 2 Way 400Va Dimmer Switch
- PRW145** 1 Gang 2 Way 250Va Dimmer Switch
- PRW146** 2 Gang 2 Way 250Va Dimmer Switch
- PRW147** 3 Gang 2 Way 250Va Dimmer Switch
- PRW148** 4 Gang 2 Way 250Va Dimmer Switch
- SP900** Dimmer M10 Nut Runner Tool

Use the nut runner SP900 to easily exchange dimmer modules and create customised dimmer switch plate.

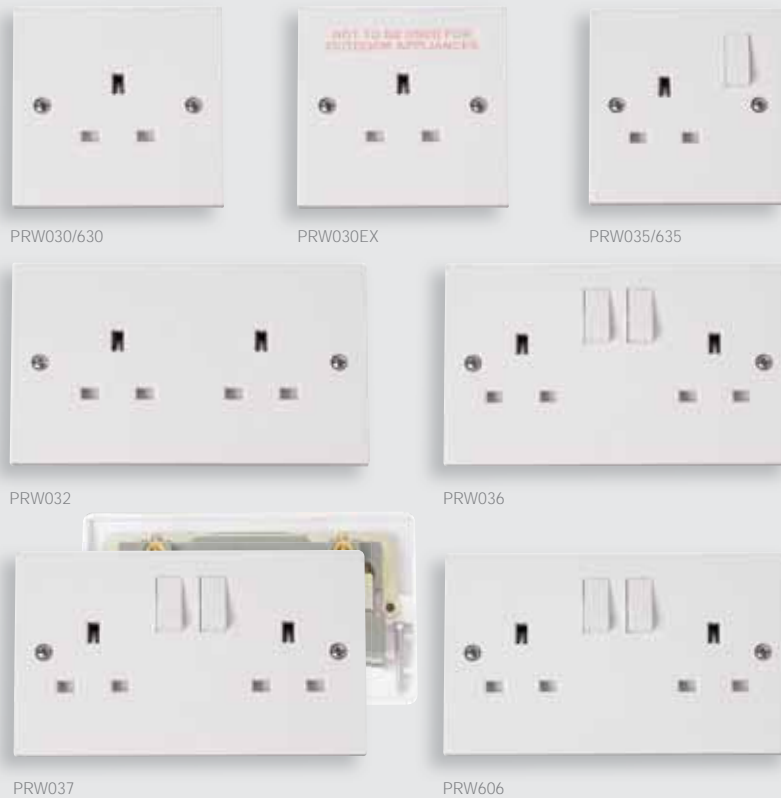
Standards: BS EN 60669, BS EN 55015 **Type:** Leading Edge, MD9014: Leading & Trailing Edge
Back Box Depth: 25mm Minimum **Cable Size:** 2 x 1.5mm²
Dimensions: 1 Gang: (86mm x 86mm x 11mm), 2 Gang: (146mm x 86mm x 11mm)

Power Socket Outlets, Fused Connection Units & Control Switches

All socket outlets are tested and approved to BS1363. Socket outlets are available with single or double pole switches. Twin earth terminals are available on 1 and 2 gang socket outlets in order to comply with regulation 607 of BS7671 IEE Wiring Regulations. As with the plate switches, the actual switch rocker features a gentle curved appearance.



13A Wall Socket Outlets | USB Sockets | Round Pin Wall Socket Outlets | Fused Connection Units Fan Isolation Switches | DP Switches



Unswitched Socket Outlets

- PRW030** 13A 1 Gang Unswitched Socket
- PRW030EX** 13A 1 Gang Unswitched Socket - Printed 'Not To Be Used For Outdoor Appliances'
- PRW032** 13A 2 Gang Unswitched Socket

- PRW035** 13A 1 Gang DP Switched Socket
- PRW036** 13A 2 Gang DP Switched Socket
- PRW037** 13A 2 Gang DP Switched Clean Earth Socket

Switched Socket Outlets

- PRW605** 13A 1 Gang Switched Socket
- PRW606** 13A 2 Gang Switched Socket
- PRW630** 13A 1 Gang Unswitched Socket With Twin Earth Terminals
- PRW635** 13A 1 Gang DP Switched Socket With Twin Earth Terminals

Safety Shutter Socket Outlets

- PRW1035** 13A 1 Gang DP 3 Pin Safety Shutter Switched Socket
- PRW1036** 13A 2 Gang DP 3 Pin Safety Shutter Switched Socket (Twin Earth)
- PRW1037** 13A 2 Gang DP 3 Pin Safety Shutter Switched Clean Earth Socket
- PRW1635** 13A 1 Gang DP 3 Pin Safety Shutter Switched Clean Earth Socket

Round Pin Socket Outlets

- PRW034** 15A Switched Round Pin Socket
- PRW038** 5A Round Pin Socket
- PRW039** 2A Round Pin Socket

Switched Sockets With USB Outlets

- PRW771U** 13A 1 Gang Switched Socket With 2.1A USB Outlet
- PRW770** 13A 2 Gang Switched Socket With 2.1A USB Outlet (Twin Earth)
- PRW780** 13A 2 Gang Switched Socket With Twin 2.1A USB Outlets (4.2A) (Twin Earth)

Standards: BS 1363
 Back Box Depth: 25mm Minimum Cable Size: 4 x 2.5mm² / 2 x 4mm²
 Dimensions: 1 Gang: (86mm x 86mm x 11mm), 2 Gang: (146mm x 86mm x 11mm)

Standards: 034, 038, 039: BS 546 770, 771U, 780: BS1363-2: 2016 +A1: 2018, BS EN 62368-1, BS EN 62680-1-1
 Cable Size: 2A: 2 x 2.5mm² / 3 x 1.5mm² 5A: 2 x 2.5mm² / 3 x 1.5mm² 15A: 4 x 2.5mm² / 1 x 6mm² / 1 x 10mm²
 771U, 770: 4 x 2.5mm² / 2 x 4mm²
 Back Box Depth: 25mm min.
 Dimensions: 1 Gang: (86mm x 86mm x 11mm), 2 Gang: (146mm x 86mm x 11mm)



PRW049/PRW050



PRW051



PRW052



PRW053



PRW020



PRW291



PRW023



PRW024



PRW040



PRW042



PRW660



PRW675

Fused Connection Units With Optional Flex Outlet

- PRW049** 3A Fused Connection Unit
- PRW050** 13A Fused Connection Unit
- PRW051** 13A Switched Fused Connection Unit
- PRW052** 13A Switched Fused Connection Unit With Neon
- PRW053** 13A Fused Connection Unit With Neon

Fused Control Switch Plates

- PRW290** 3A FCU With DP Switch (Linked)
- PRW291** 3A FCU With DP Switch & DP Fan Switch (Linked)

20A Control Switches with Optional Flex Outlet

- PRW022** 20A DP Switch
- PRW023** 20A DP Switch With Neon
- PRW040** 20A DP 'Water Heater' Switch
- PRW042** 20A DP 'Water Heater' Switch With Neon

Fan Isolation Switch

- PRW020** 10A 3 Pole Fan Isolation Switch
- PRW021** 10A 3 Pole Isolation Switch

Lockable Switch

- PRW660** 20A Double Pole Key Lockable Switch

Lockable Socket

- PRW675** 13A 1G DP Key Lockable Socket With Neon

Standards: BS 1363 and BS 1362 (fuse)
 Back Box Depth: 25mm Minimum Cable Size: 3 x 2.5mm² or 2 x 4mm²
 Dimensions: 1 Gang: (86mm x 86mm x 11mm)

Standards: BS EN 60669 660, 675: BS 1363-2, BS EN 60669-1
 Back Box Depth: 25mm Minimum 660, 675: 35mm Minimum Cable Size: 20A DP: 4 x 2.5mm² 10A 3P: 1 x 2.5mm² / 2 x 1.5mm²
 660, 675: 3 x 2.5mm², 2 x 4mm²
 Dimensions: 1 Gang: (86mm x 86mm x 11mm)



PRW200



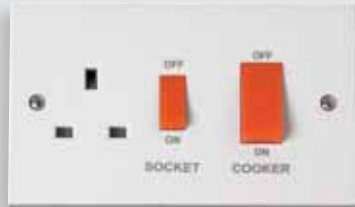
PRW201



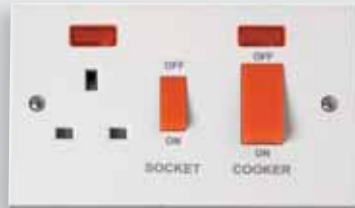
PRW202



PRW203



PRW204



PRW205



PRW500



PRW501



PRW503



PRW505

45A Switches And Socket Outlets

- PRW200** 45A 1 Gang DP Switch
- PRW201** 45A 1 Gang DP Switch With Neon
- PRW202** 45A 2 Gang DP Switch
- PRW203** 45A 2 Gang DP Switch With Neon
- PRW204** 45A 2 Gang DP Switch With 13A DP Switched Socket
- PRW205** 45A 2 Gang DP Switch With 13A DP Switched Socket & Neons

Standards: BS EN 60669, BS 4177
 Back Box Depth: 35mm Minimum Cable Size: 45A: 1 x 16mm²
 Dimensions: 1 Gang: (86mm x 86mm x 11mm), 2 Gang: (146mm x 86mm x 11mm)

45A Switches And Socket Outlets With White Rockers

- PRW500** 45A 1 Gang DP Switch With White Rocker
- PRW501** 45A 1 Gang DP Switch With White Rocker & Neon
- PRW502** 45A 2 Gang DP Switch With White Rocker
- PRW503** 45A 2 Gang DP Switch With White Rocker & Neon
- PRW504** 45A 2 Gang DP Switch With 13A DP Switched Socket & White Rockers
- PRW505** 45A 2 Gang DP Switch With 13A DP Switched Socket, White Rockers & Neons

Standards: BS EN 60669, BS 4177
 Back Box Depth: 35mm Minimum Cable Size: 45A: 1 x 16mm²
 Dimensions: 1 Gang: (86mm x 86mm x 11mm), 2 Gang: (146mm x 86mm x 11mm)



PRW208



PRW210/
PRW211



PRC009



PRC210



PRW213



PRC216

essentials™ Decorative covers available for PRC210, see Essentials™ page m28

Fan Isolation Pull Cord Switches

PRW208 10A 3 Pole Fan Isolation Pull Cord Switch

45A & 50A Pull Cord Switches

PRW210 45A DP Pull Cord Switch With Mechanical 'On/Off' & Neon

PRW211 50A DP Pull Cord Switch With Mechanical 'On/Off' & Neon

PRW213 50A DP Round Pull Cord Switch With Mechanical 'On/Off', Neon & Pattress

10AX & 16A Pull Cord Switches

PRC009 10AX 2 Way Ceiling Pull Cord Switch

PRC210 10AX 2 Way Pull Cord Switch

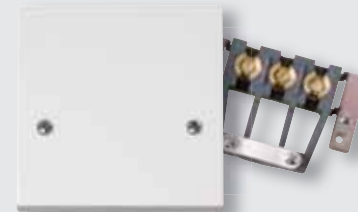
PRC216 16A DP Pull Cord Switch With Neon

Standards: BS EN 60669

Cable Size: 009, 208, 210: 3 x 2.5mm² / 1 x 6mm² 211: 2 x 6mm² / 1 x 25mm² 213: 2 x 6mm² / 1 x 25mm² 216: 3 x 1.5mm² / 2 x 2.5mm²

Dimensions: PRC009: 75.5mm Dia. x 43.5mm PRC210/216: 70mm Dia. x 42mm PRW208: 86mm x 86mm x 43mm

PRW210/211: 86mm x 86mm x 43mm PRW213: 100mm Dia. x 77mm



PRW215



PRW217



PRW218

45A Cooker Connection Plates

PRW215 45A 1 Gang Cooker Connection Plate

Pattress Box for PRW217 - Urea

PRW218 35mm Deep Pattress Box For Use With PRW217

45A Cooker Outlet Plates

PRW217 45A Easyfit Dual Appliance Outlet Plate

UK Design Registration No. 3015175

Standards: 215/217: BS 5733

Back Box Depth: 215: 35mm Minimum 217: 25mm Minimum

Cable Size: 215: 2 x 10mm² 217: 1 x 10mm² Dimensions: 215: 84mm x 84mm x 23mm 217: 84mm x 130mm x 27mm



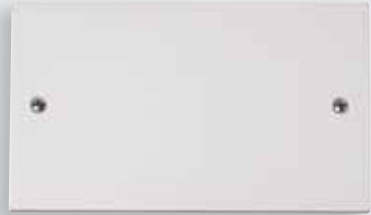
PRW100



PRW090



PRW017



PRW061

Flex Outlet Plates

PRW017 20A Flex Outlet Plate

Blank Plates

PRW060 1 Gang Blank Plate

PRW061 2 Gang Blank Plate

Connector Box

PRW090 15A 10 Way Surface Connector Box
(for use with central heating installations)

Dual Voltage Shaver Socket

PRW100 115/230V Dual Voltage Shaver Socket

Click® dual voltage shaver outlets incorporate a double wound isolating transformer rated 20Va at 230V or 115V and meets BS EN 61558-2-5: 2010 making it safe for use in bathrooms. Shaver outlet is not continuously rated and therefore not suitable for use as a permanent charging outlet.

Standards: 100: BS EN 61558 017: BS 5733

Back Box Depth: 017: 16mm min, 100: 47mm min, **Cable Size:** 100: 2 x 1.5mm² / 1 x 2.5mm², 017: 1 x 6mm² / 4 x 2.5mm²

Dimensions: 1 Gang: (86mm x 86mm x 11mm), 2 Gang: (146mm x 86mm x 11mm)

TV, Telephone & Data Sockets

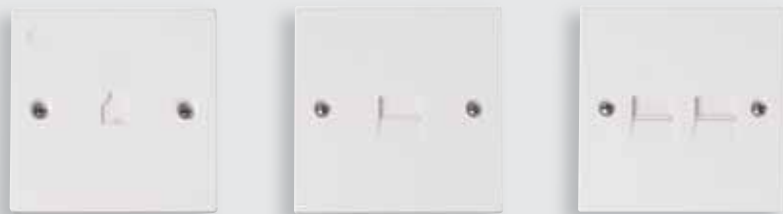
Providing the means to facilitate the connection of modern communications equipment is as important today as it is to provide the electrical power to operate them.

This section of the catalogue is devoted to the New Media™ range of plate accessories which includes products for connecting telephone, computer, television and satellite devices.



RJ11 Outlet | UK Telephone Outlets |
Satellite Socket Outlets | Coaxial Sockets





PRW115

PRW119/120/124/125

PRW121/122/126/127

Twin outlets are 2 separate sockets and not internally linked together.

RJ11 Telephone Outlet - PC

PRW115 Single RJ11 (Irish/US) Outlet

Telephone Outlets - Urea

PRW119 Single Telephone Outlet - Master

PRW122 Twin Telephone Outlet - Master

PRW124 Single Telephone Outlet - Secondary

PRW127 Twin Telephone Outlet - Secondary

Telephone Outlets - PC

PRW120 Single Telephone Outlet - Master

PRW121 Twin Telephone Outlet - Master

PRW125 Single Telephone Outlet - Secondary

PRW126 Twin Telephone Outlet - Secondary

Back Box Depth: 16mm Minimum RJ11: 35mm Minimum **Termination Type:** IDC
Dimensions: Urea: (86mm x 86mm x 11mm), PC: (85mm x 85mm x 8mm)



PRW065

PRW066

PRW156



PRW170



PRW157



PRW158



PRW159

Isolated outlets will filter out any interference, if a 2 way signal is required, i.e. for use with satellite hard wire extensions, then a non-isolated outlet is required.

Non-Isolated Coaxial Outlets (Unshielded)

PRW065 Single Coaxial Outlet

PRW066 Twin Coaxial Outlet

Isolated Coaxial Outlets (Unshielded)

PRW158 Single Isolated Coaxial Outlet

PRW159 Twin Isolated Coaxial Outlet

Satellite Outlets (Unshielded)

PRW156 Non-Isolated Single Satellite Outlet

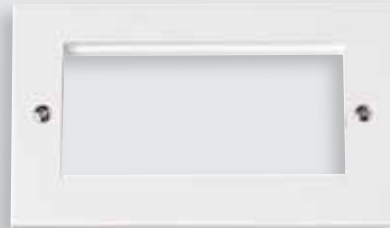
PRW170 Non-Isolated Satellite & Non-Isolated Coaxial Outlet

PRW157 Isolated Satellite & Isolated Coaxial Outlet

Back Box Depth: 16mm Minimum
Dimensions: 1 Gang: (86mm x 86mm x 11mm), 2 Gang: (146mm x 86mm x 11mm)



PRW310



PRW312



PRW311



MM410BK



MM405WH



MM501BK



MM440BK



For a complete range of New Media™ modules please see our dedicated New Media™ section.

Unfurnished Plates - New Media™

- PRW310** 1 Gang New Media™ Unfurnished Plate - 1 Aperture
- PRW311** 1 Gang New Media™ Unfurnished Plate - 2 Apertures
- PRW312** 2 Gang New Media™ Unfurnished Plate - 4 Apertures

Selecting from a range of module inserts covering all manner of media transfer, the installer will now be able to configure their own arrangement of TV, radio or satellite reception, plus speaker, telephone and data outlets. All modules can be inserted into single or double wall plates, fitted onto standard switch and socket boxes.

Back Box Depth: Dependant on module used
Dimensions: 1 Gang: (86mm x 86mm x 11mm), 2 Gang: (146mm x 86mm x 11mm)



PRW080



PRW081



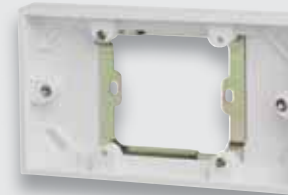
PRW082



PRW084



PRW089



PRW091



PRW175



PRW176

essentials™

For the complete range of back boxes see Essentials™ page m7.

Pattress Boxes - PVC

- PRW230** 1 Gang 29mm Deep PVC Pattress Box - Trunking
- PRW240** 1 Gang 29mm Deep PVC Pattress Box - Conduit
- PRW235** 2 Gang 29mm Deep PVC Pattress Box - Trunking
- PRW245** 2 Gang 29mm Deep PVC Pattress Box - Conduit

Architrave Pattress Boxes

- PRW175** 1 Gang 19mm Deep Architrave Pattress Box with Earth Terminal
- PRW176** 2 Gang 19mm Deep Architrave Pattress Box with Earth Terminal
For Polar™ products only

Converter Pattress Box

- PRW091** 1 Gang To 2 Gang 16mm Deep Converter Pattress

Moulded Pattress Boxes

- PRW080** 1 Gang 16mm Deep Pattress Box With Earth Terminal
- PRW081** 1 Gang 25mm Deep Pattress Box
- PRW083** 1 Gang 35mm Deep Pattress Box
- PRW084** 2 Gang 35mm Deep Pattress Box
- PRW085** 1 Gang 47mm Deep Pattress Box With Earth Terminal
- PRW086** 2 Gang 47mm Deep Pattress Box Fitted With Cable Restraint & Earth Terminal
- PRW082** 2 Gang 25mm Deep Pattress Box
- PRW089** Dual Accessory 29mm Deep Pattress Box With Earth Terminal



WA095



WA102



WA106P



WA107P



GA100



WA4247

MINIGRID® For the complete range of FlameGuard® back boxes see Essentials™ page m8.
 For the complete range of back boxes see Essentials™ page m4.

Galvanised Steel Back Boxes

- WA092** 1 Gang 16mm Deep Galvanised Steel K.O. Box
- WA093** 1 Gang 25mm Deep Galvanised Steel K.O. Box
- WA094** 2 Gang 25mm Deep Galvanised Steel K.O. Box
- WA095** 1 Gang 35mm Deep Galvanised Steel K.O. Box
- WA096** 2 Gang 35mm Deep Galvanised Steel K.O. Box
- WA097** 1 Gang 47mm Deep Galvanised Steel K.O. Box
- WA098** 2 Gang 47mm Deep Galvanised Steel K.O. Box
- WA099** 1 + 1 35mm Deep Dual Accessory Box
- WA102** 1 + 2 35mm Deep Dual Accessory Box
- WA671** 1 Gang 25mm Deep Architrave Box With 60.3mm Hole Centres
- WA672** 2 Gang 25mm Deep Architrave Box With 120.6mm Hole Centres

'Ezylink' Dry Lining Box Connector

- GA100** 'Ezylink' Dry Lining Box Connector

Dry Lining Boxes

- WA087P** 1 Gang 35mm Deep Dry Lining Box
- WA088P** 2 Gang 35mm Deep Dry Lining Box
- WA106P** 1 Gang 47mm Deep Dry Lining Box
- WA107P** 2 Gang 47mm Deep Dry Lining Box
- WA108P** Round Ceiling 34mm Deep Dry Lining Box

FlameGuard® Dry Lining Boxes

- WA4135** 1 Gang 35mm Deep FlameGuard® Dry Lining Box
- WA4235** 2 Gang 35mm Deep FlameGuard® Dry Lining Box
- WA4147** 1 Gang 47mm Deep FlameGuard® Dry Lining Box
- WA4247** 2 Gang 47mm Deep FlameGuard® Dry Lining Box