

FIXED INTEGRATED LED DOWNLIGHT
DIMMABLE AS STANDARD

United Kingdom

Scolmore
GROUP

Scolmore Park, Landsberg,
Lichfield Road Industrial Estate,
Tamworth, Staffordshire
B79 7XB, United Kingdom

T: +44 (0)1827 63454
F: +44 (0)1827 63362
E: sales@scolmore.com

www.scolmore.com

Southern Ireland

CLiCK Litehouse

18 Corrig Road,
Sandyford,
Dublin
D18 WV79, Ireland

T: +353 (1) 2811 122
F: +353 (1) 2811 224
E: sales@clicklighthouse.ie

www.clicklighthouse.ie





Inceptor Pico

Fixed Integrated LED Downlight

Dimmable as standard

The Inceptor Pico is the latest non fire-rated addition to the Inceptor range, it offers a cost effective LED solution whilst producing an excellent light output for the power utilised.

The fitting combines a number of key features which sets it apart from competitor products. The Inceptor Pico is ideal for installations where the void depth is limited and is an ideal solution for non fire-rated applications.

As well as being suitable for variable ceiling board thickness whether plasterboard or wooden panelling. The Pico has an adaptable cut-out and will fit apertures of 65mm to 75mm diameter.

Our latest downlight design utilises a lens constructed from high quality polycarbonate. The frosted front provides improved beam angle resulting in a smoother distribution of light.

Once installed, ingress protection is applied making the Pico dust tight and offers protection against low pressure water jets. This makes the Pico an ideal solution for kitchens, bathrooms and wet rooms.

Available in dimmable option as standard the Pico can be easily switched or dimmed utilising a variety of methods. It is suitable for use with the iNELS range of wireless automation products currently available from Scolmore - more details can be found at www.scolmore.com.

Features



47mm
LOW PROFILE

- Integrated Driver
- Single piece moulded body
- No visible LED spots
- Plated metal finishes
- 20,000 hours
- Shallow Recess Depth

LED SMD LED technology in cool or warm white colour temperatures.

IP65 RATED Dust tight and protected against low pressure water jets.

90° BEAM ANGLE A 90° beam angle provides more light coverage through each room.

Benefits



350lm WARM WHITE **390lm** COOL WHITE

SMD LED Technology

Surface mounted LED have high reliability performance and utilize very little power, resulting in low energy consumption which offers a cost saving solution against that of traditional lamps.

Energy Efficient



The Inceptor Pico has an energy saving rating of A+ and an L70 LED lifetime of 20,000hrs resulting in zero maintenance, low energy consumption for the lifetime of the product.

Screw Down Cable-Grip

A terminal cover with built-in cable-grip both saves time and ensures that no strain is placed on the terminal connections.



Loop In & Out Terminals

Loop in and out terminals allow easier connection of multiple fittings (daisy-chain). The fitting is double-insulated and no Earth is required

Inceptor Product Range:

Other products in the Inceptor range include our popular fire-rated, integrated LED downlights each with a pre-wired Flow connector providing ease of installation which sets them apart from the competition.



Inceptor Max Fixed Downlight

500lm WARM WHITE **550lm** COOL WHITE



Inceptor Max Adjustable Downlight

500lm WARM WHITE **550lm** COOL WHITE



Inceptor Micro Fixed & Adjustable Downlight

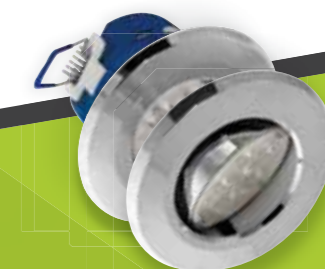
400lm WARM WHITE **420lm** COOL WHITE



IP65



IP64



IP44 FIXED IP20 ADJUSTABLE

Inceptor Pico

Fixed Integrated LED Downlight

Dimmable as standard

The Inceptor Pico is the latest non fire-rated addition to the Inceptor range, it offers a cost effective LED solution whilst producing an excellent light output for the power utilised.

The fitting combines a number of key features which sets it apart from competitor products. The Inceptor Pico is ideal for installations where the void depth is limited and is an ideal solution for non fire-rated applications.

As well as being suitable for variable ceiling board thickness whether plasterboard or wooden panelling. The Pico has an adaptable cut-out and will fit apertures of 65mm to 75mm diameter.

Our latest downlight design utilises a lens constructed from high quality polycarbonate. The frosted front provides improved beam angle resulting in a smoother distribution of light.

Once installed, ingress protection is applied making the Pico dust tight and offers protection against low pressure water jets. This makes the Pico an ideal solution for kitchens, bathrooms and wet rooms.

Available in dimmable option as standard the Pico can be easily switched or dimmed utilising a variety of methods. It is suitable for use with the iNELS range of wireless automation products currently available from Scolmore - more details can be found at www.scolmore.com.

Features



47mm
LOW PROFILE

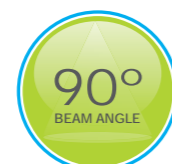
- Integrated Driver
- Single piece moulded body
- No visible LED spots
- Plated metal finishes
- 20,000 hours
- Shallow Recess Depth



SMD LED technology in cool or warm white colour temperatures.

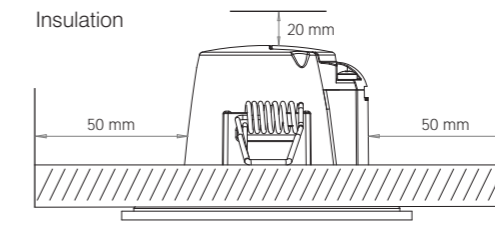
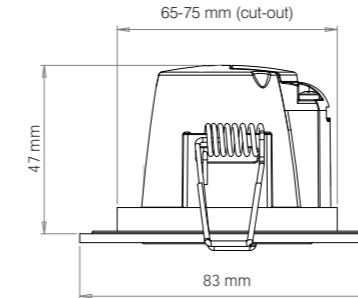


Dust tight and protected against low pressure water jets.



A 90° beam angle provides more light coverage through each room.

Technical Specifications



The fitting should not be covered in thermal insulation. We recommend leaving 50mm around and 20mm above the fitting to allow sufficient room for cooling.

General Information	Inceptor Pico	
Dimmable/Non-Dimmable	Dimmable	
Finish Colours Available	White, Chrome & Satin Chrome	
LED Colour Temperatures available	2700K (Warm)	4000K (Cool)
Luminous Flux (typ)	350Lm	390Lm
Luminous Efficacy (typ)	63Lm/W	70Lm/W
LED quantity	5	
RA (min)	>80	
SDCM	≤6	
Lifetime (L70)	20,000	
Safety Class	Class II	
IP Rating	IP65	
Cut-Out	65mm - 75mm	
Ceiling Thickness	5mm-25mm	
Height	47mm	
Beam Angle	90°	
Driver Information		
Input Voltage	220-240V~	
Input Current	32mA	
Input Frequency	50/60Hz	
Input Wattage	5.5W	
Power Factor	0.8	
Output Voltage	45Vdc	
Output Current	100mA	
Tc (surface Temp)	80°C	
Ta (ambient max)	40°C	

Inceptor Pico IP65 Fixed Integrated LED Downlight - Cool White		
LED3500CH5CD	240V 5.5W Integrated LED - Cool White	Chrome Bezel
LED3500SC5CD	240V 5.5W Integrated LED - Cool White	Satin Chrome Bezel
LED3500WH5CD	240V 5.5W Integrated LED - Cool White	White Bezel
Inceptor Pico IP65 Fixed Integrated LED Downlight - Warm White		
LED3500CH5WD	240V 5.5W Integrated LED - Warm White	Chrome Bezel
LED3500SC5WD	240V 5.5W Integrated LED - Warm White	Satin Chrome Bezel
LED3500WH5WD	240V 5.5W Integrated LED - Warm White	White Bezel

The Full Product Range

Available in our 3 most popular finishes - White, Satin Chrome & Chrome.



Chrome Bezel



Satin Chrome Bezel



White Bezel

*Dimmable version suitable for use with selected dimmers only. Please see our website or contact the technical department on 01827 63454.